

CasMatch

COLOR AND SIZE MATCHING STICKER

Intended Purpose

CasMatch is the first color chart to correct graphical content(i.e., photo color tone and size) using computer software.

Product Features

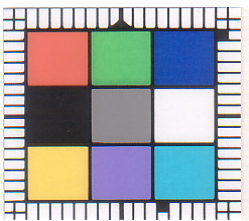
- Easy to comprehend case changes over time and with treatment course.
- Easy to compare and contrast photos, even those taken under different conditions or targeting different subjects.
- Can correct inadequate color of minute cadre clearly.
- Can correct inadequate color photo defects caused by exposure conditions into a color accurate to the subject.
- The 1mm scale enables measurement of the subject.
- Can correct photo color that has changed over time.
- Can digitize a photo color tone to a preferred standard.

Including CasMatch in the photograph makes it possible to create a standard color tone and size. Thus, even a photo taken at uneven exposure, incorrect scale, or under poor shooting conditions, with CasMatch, can be compared to other photographs in similar colors and ultimately used to devise a treatment plan and inform clinical judgement.

※**Adobe Photoshop is necessary to use CasMatch.**

Once the correct value is initially set up, a color closer to the subject can be duplicated during photography. You can use CasMatch in many areas to correct color tone and content size to a consistent standard. Record graphic content more clearly at the clinical moment.

Manual

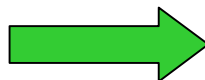
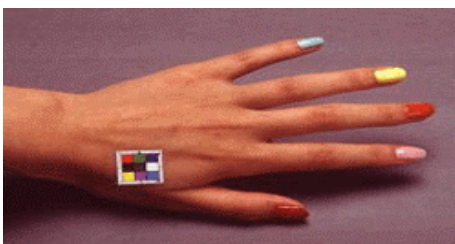


Peel CasMatch from cardboard and apply it near the target subject with the "▲" mark upwards, angled to avoid flash reflection on CasMatch.

Photographic Quality Comparison

Shooting conditions always differ in light source, subject location, and other characteristics. By using CasMatch to adjust photo quality, even graphical content difficult to adjust in color tone and size can be compared similar subjects, as shown below.

※**before adjustment**



※**after adjustment**

